

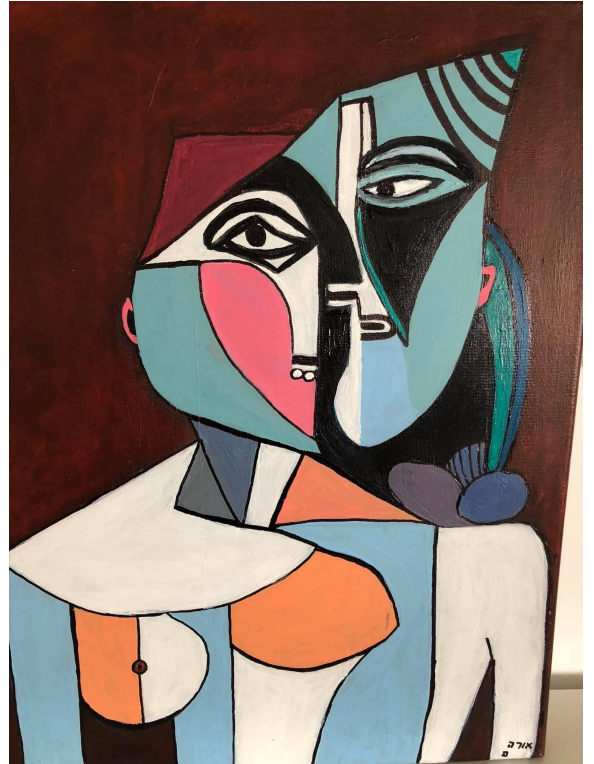
NZIPP are delighted to be welcoming two British Society psychoanalysts and authors, Philip Stokoe and Mary Morgan on their travels around Aotearoa in October 2022. We are hosting this special in-person event with presentations from each, allowing us to experience their conceptual frameworks and approaches to clinical work first hand.

DATE&TIME: Thursday 27 October, 5-8.30 pm

VENUE: St Luke's Community Centre
130 Remuera Road

COST: full price \$ 120, full time students \$ 50

Zoom is also available upon registration.



THE IMPORTANCE OF CURIOSITY IN THE DEVELOPMENT OF THE CONSCIOUS MIND AND IN BORDERLINE STATES

Presenter: Phil Stokoe

Why is it that all human infants 'turn to face reality', bringing on the reality principle, and no other animal does? In this paper I shall argue that Bion's concepts of K (the urge to **know**) and alpha function explain this difference. I will explain why I prefer the term 'curiosity' to K and show how this model helps to understand key developmental problems, using the creation of a potential borderline state as my example. I shall indicate how the understanding of the central function of curiosity helps clinically.

Philip is a Psychoanalyst in private practice working with adults and couples, and an Organisational Consultant, providing consultation to a wide range of organisations.

He was a senior manager in a range of health and social care settings since 1978 ending up in the Adult Department of the Tavistock & Portman NHS Foundation Trust between 1994 and 2012, he was the Clinical Director from 2007. He is a member of the European Psychoanalytic Federation Forum on Institutional Matters, which studies the nature of psychoanalytic institutions. He has published articles and chapters on a range of psychoanalytic and organisational topics. His book, *The Curiosity Drive: Our Need for Inquisitive Thinking*, was published by Phoenix Publishing House in November 2020 and short-listed for the Gradiva® Award for Best Psychoanalytic Book in 2021.

NARCISSISM AND SHARING PSYCHIC SPACE IN COUPLE RELATIONSHIPS

Presenter: Mary Morgan

In couple relationships there are inevitably ordinary narcissistic problems which relate to the tension of being both an individual and part of a couple. The idea of 'non-relating' is contrasted with 'anti-relating' (Colman). In more disturbed relationships we see narcissism manifesting in particular ways, such as in adherent or detached dynamics (Britton) or the projective gridlock dynamic (Morgan). Couples create these dynamics together but a sign of health might be when one of the partners is breaking free of the anti developmental grip of the narcissism and brings the couple for help. Clinical examples will be given to illustrate this thinking.

Mary Morgan is a Psychoanalyst and Couple Psychoanalytic Psychotherapist, Fellow of the British Psychoanalytical Society, Senior Fellow of Tavistock Relationships and Honorary Member of the Polish Society for Psychoanalytic Psychotherapy. She worked for more than 30 years at Tavistock Relationships, London, where she was the Reader in Couple Psychoanalysis and Head of the MA and Professional Doctorate in Couple Psychoanalytic Psychotherapy. She is a consultant to the IPA Committee on Couple & Family Psychoanalysis - COFAP, member of the editorial board of the IJP and the international advisory board of Couple & Family Psychoanalysis. She has published many articles and chapters in the field of couple psychoanalysis, teaches internationally and has helped set up trainings in several countries. Her recent book: 'A Couple State of Mind: Psychoanalysis of Couples – the Tavistock Relationships Model' is available in English, Polish, Russian, Italian and Chinese.

Please book by payment to the NZIPP account: 38-9016-0052471-00 by 25 October 2022.

Wine and cheese will follow the discussion.